

09037 - 72

TITLE Check membrane fraction

From Page No. 65

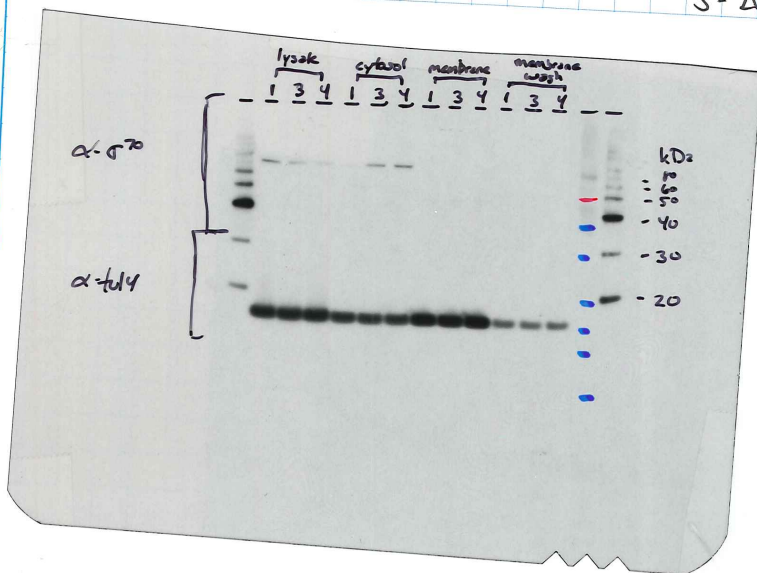
PROJECT NO. \_\_\_\_\_

WB:

- incubate in 1<sup>st</sup> antibody, ~1 hr  
     top  $\alpha$ - $\sigma^{70}$  1:1500 (5/29/18)  
     bottom  $\alpha$ -tub 1:150,000 (6.6.18)
- Wash 4x10'
- Reblock 30'
- incubate in goat  $\alpha$  mouse (2mL/10mL) ~ 1 hr
- Wash 4x10'
- Develop ~ /Ru kit

\* Note poor  $\sigma^{70}$  signal -  
 I think the control  
 part of the membrane  
 died up a bit @ 4°C &  
 so long! Another reason  
 to re-do, but can compare  
 to p. 63

1 =  $\beta$ -V  
 2 =  $\Delta$ pmrA Pr:M-V  
 3 =  $\Delta$ pmrA Apr:M



Seems like  
 tub may be  
 like Pr:M-  
 so abundant  
 it can be  
 detected anywhere!

Signal is still  
 blown out, but  
 there doesn't  
 seem to be  
 a sig. difference  
 in tub abundance  
 anywhere between  
 1 & 3!  $\downarrow$

Plan for next time: load ~~same~~ ~~lysates~~ ~~check~~ load less of  
 load dilutions,  
 only membrane  
 & check by  
 Coomassie!

SIGNATURE \_\_\_\_\_

DATE

6/22/18

WITNESSED & UNDERSTOOD BY \_\_\_\_\_

To Page No. \_\_\_\_\_

DATE

CONFIDENTIAL