

Monoclonal Anti-*Francisella tularensis* Intracellular Growth Locus, Subunit C (IgIC) Protein, Clone IgIC1 (produced *in vitro*)

Catalog No. NR-3196

Product Description: Antibody Class: IgG1

Mouse monoclonal antibody specific to a histidine-tagged recombinant form of the intracellular growth locus, subunit C protein (IgIC) of *Francisella tularensis* (*F. tularensis*) was produced *in vitro*.

Lot¹: 7589618

Manufacturing Date: 04DEC2006

TEST	SPECIFICATIONS	RESULTS
Estimated Monoclonal Antibody Concentration²	Report results	0.5 to 2 mg/mL
Functional Activity Western Blot using whole cell antigen (see Figure 1) ^{3,4} <i>F. tularensis</i> wild type (WT) <i>F. tularensis</i> WT, grown under low-iron conditions <i>F. tularensis</i> Δ igIC mutant Western Blot titer <i>F. tularensis</i> WT Indirect Fluorescent Antibody Assay <i>F. tularensis</i> WT, methanol-treated <i>F. tularensis</i> WT, formaldehyde-treated	Reactive Reactive Not reactive Report results Report results Report results	Reactive Reactive Not reactive 1:2000 Fluorescence observed Fluorescence observed

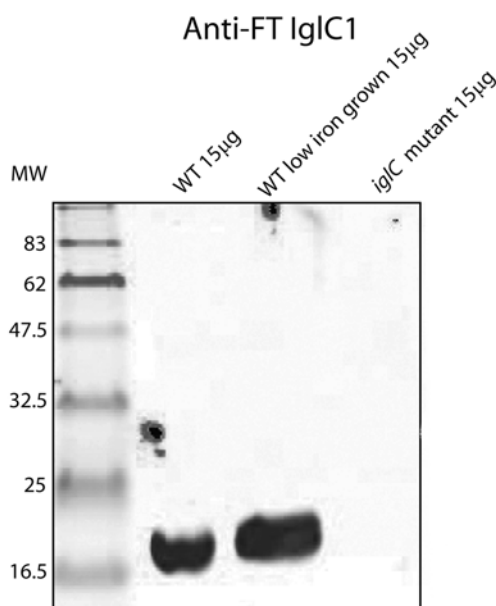
¹Produced using a two-compartment disposable bioreactor (CELLine CL 1000) from INTEGRA Biosciences.

²In a background of Dulbecco's Modified Eagle's Medium supplemented with 5% fetal bovine serum.

³Visualized using a LI-COR® Biosciences Odyssey® Infrared Imaging System.

⁴Dilutions of NR-3196 between 1:200 and 1:1000 are recommended.

Figure 1



Date: 11 JUL 2007

Signature: Signature on File

Title: Technical Manager, BEI Authentication or designee

ATCC®, on behalf of BEI Resources, hereby represents and warrants that the material provided under this certificate has been subjected by the depositor to the tests and procedures specified and that the results described, along with any other data provided in this certificate, are true and accurate to the best of ATCC®'s knowledge.

ATCC® is a trademark of the American Type Culture Collection.

You are authorized to use this product for research use only. It is not intended for human use.