

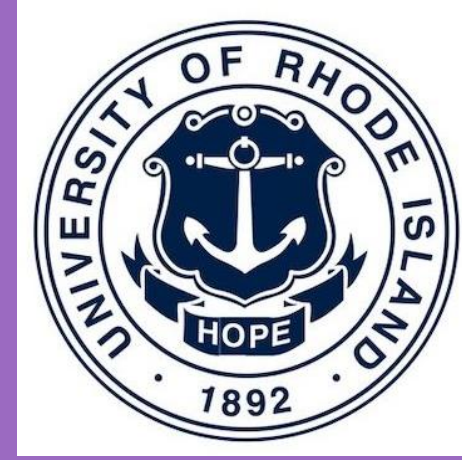
# Investigating the Molecular Mechanism of Action of the Sesquiterpene Lactone Laurenobiolide

Oli Horyn<sup>1</sup>, Kira Bernabe<sup>2</sup>, Hannah Trautmann<sup>2</sup>, Sierra Schmidt<sup>2</sup>, Steven Gregory<sup>2</sup>, Matthew Bertin<sup>3</sup>, Kathryn M. Ramsey<sup>2,3</sup>

<sup>1</sup>Department of Pharmacy Practice, University of Rhode Island, Kingston, RI 02881

<sup>2</sup>Department of Cell and Molecular Biology, University of Rhode Island, Kingston, RI 02881

<sup>3</sup>Department of Biomedical and Pharmaceutical Sciences, University of Rhode Island, Kingston, RI 02881



## INTRODUCTION

- Antibiotic resistance is a significant threat to public health
- Novel antimicrobials may be developed based on molecules derived from plants

### Laurenobiolide

- Sesquiterpene lactone
- Isolated from North American tulip tree *Liriodendron tulipifera*
- Used by indigenous tribes as a treatment for malaria
- Bioassay-guided approach identified laurenobiolide as effective against MRSA<sup>1</sup>

### *Staphylococcus aureus*

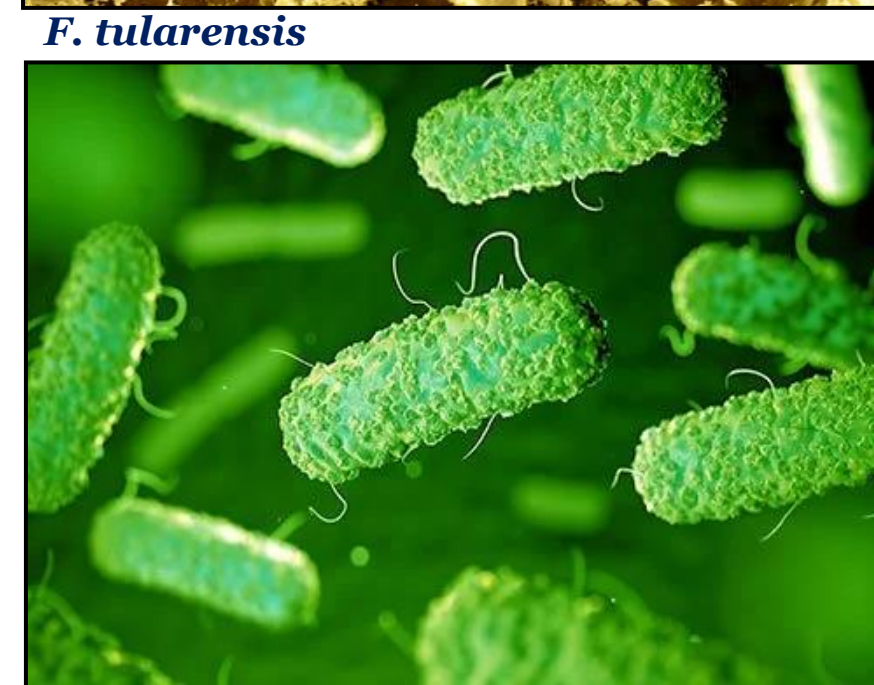
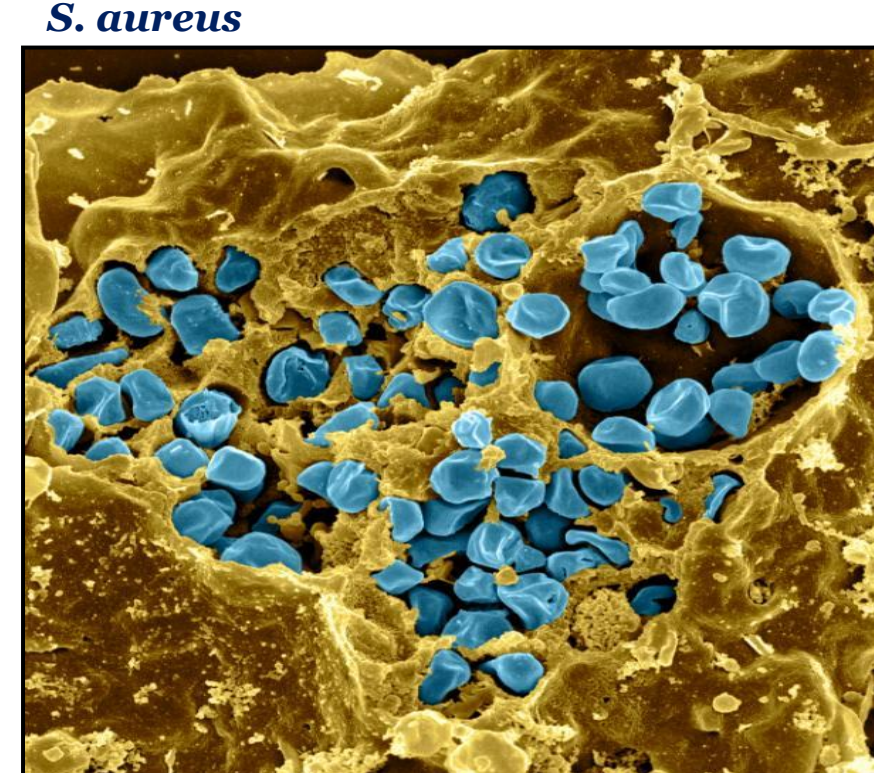
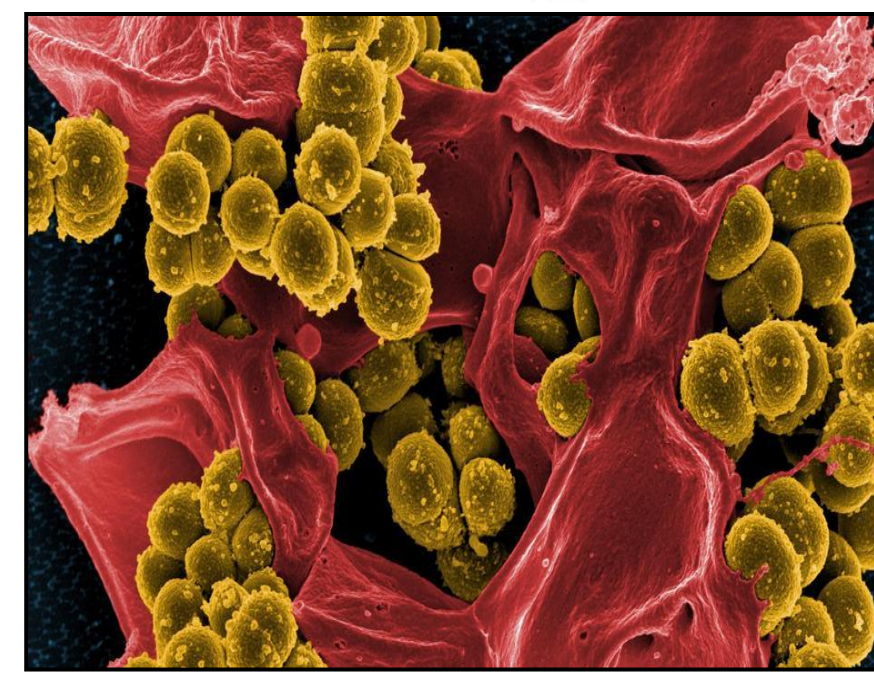
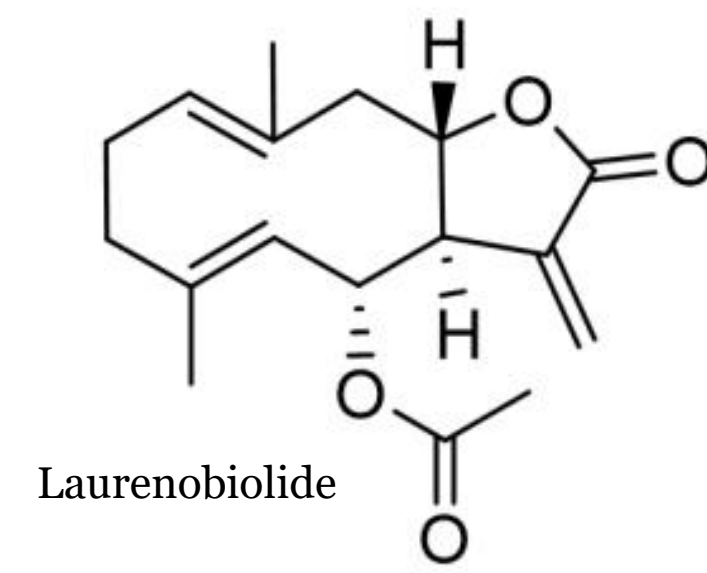
- Gram-positive
- Causes skin infections
- Can be multi-drug resistant

### *Francisella tularensis*

- Gram-negative
- Causes tularemia
- Potential bioweapon due to its highly infectious nature

### *Escherichia coli*

- Gram-negative
- Causes foodborne illness



## METHODS AND MATERIALS

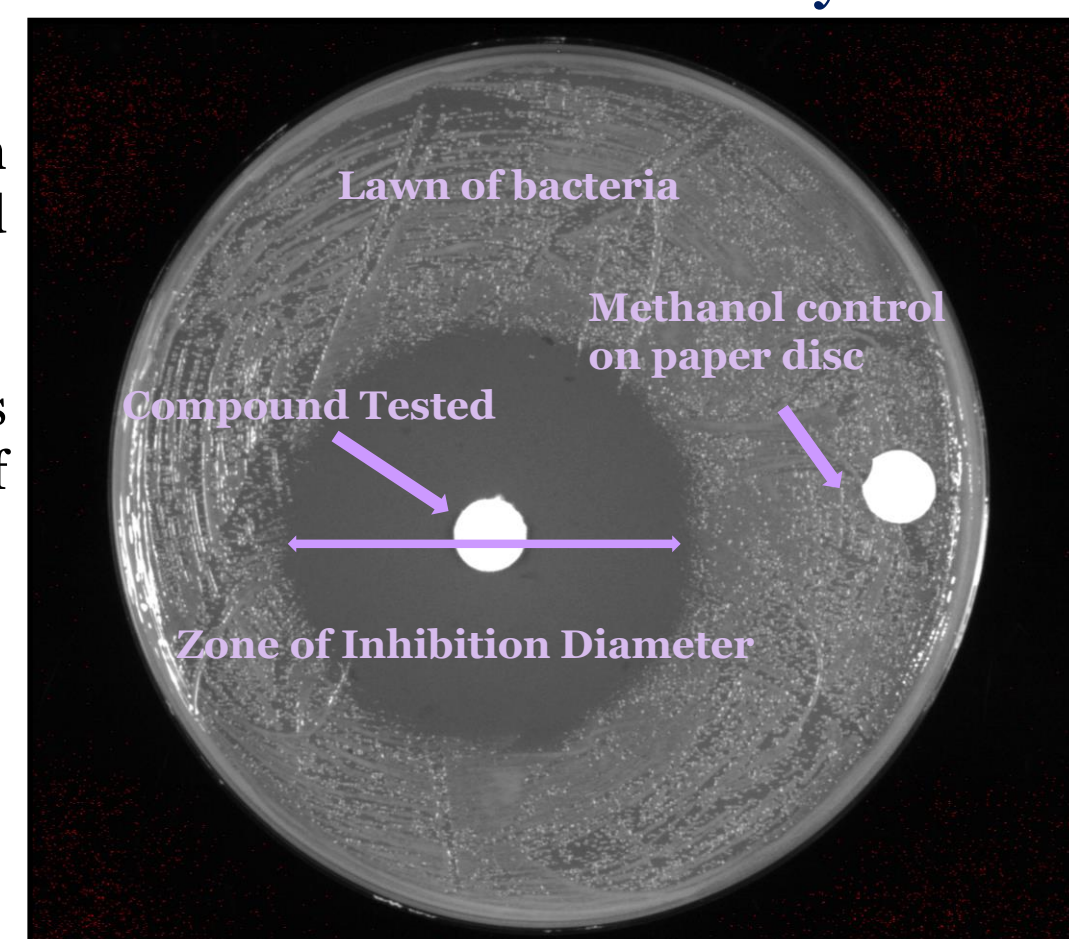
### Disc Diffusion Assay Workflow

- Plated a lawn of bacteria in triplicate
- Two discs per plate: control (methanol) and disc impregnated with compound
- Incubated at 37°C
  - 24 hours for *E. coli* and *S. aureus*
  - 48 hours for *F. tularensis*

### Organisms Tested

*Staphylococcus aureus* - SA113  
*Escherichia coli* - ATCC25922  
*Francisella tularensis* - Live Vaccine Strain (LVS)

### Disc Diffusion Assay

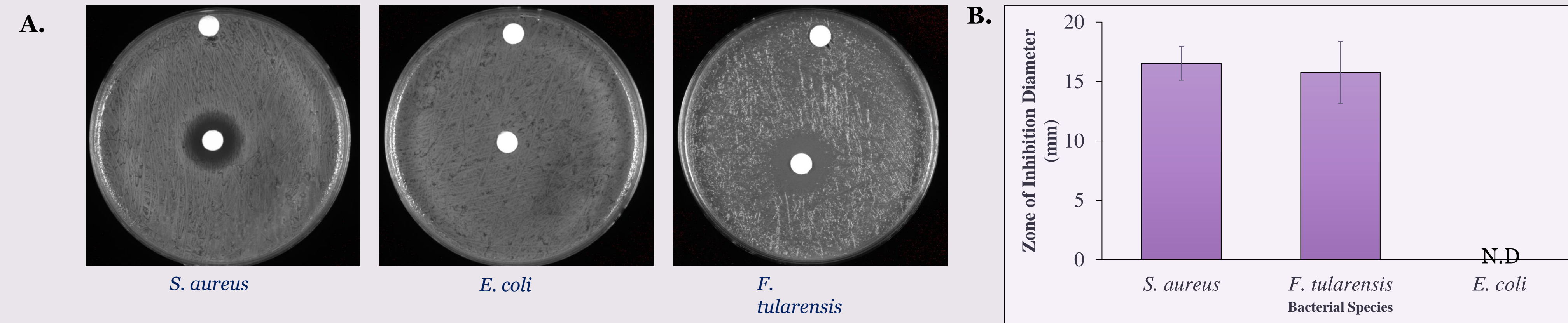


- Performed with indicated organisms in biological triplicate using discs impregnated with 8 mg/mL laurenobiolide.

- Plates were incubated for 24 or 48 hours (organism dependent), and zones of inhibition were measured in mm.

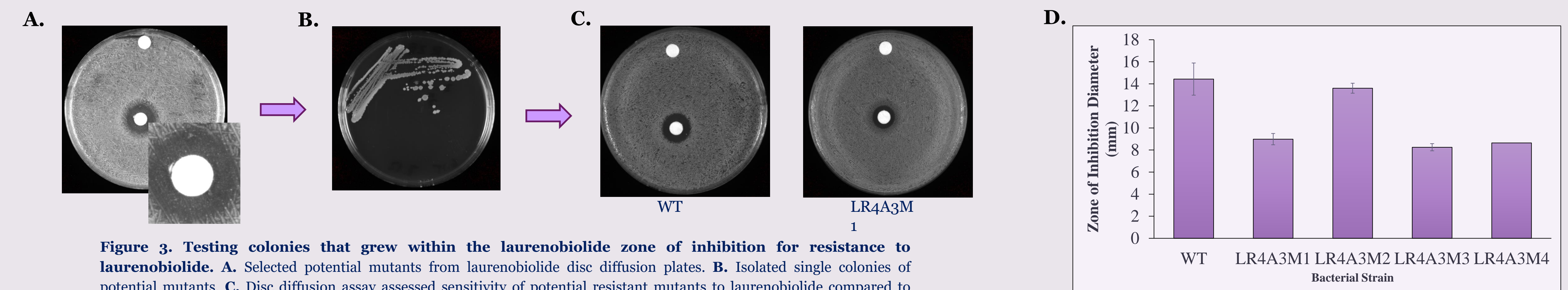
## RESULTS

### Antimicrobial Activity of Laurenobiolide



**Figure 1. Multiple bacterial species are sensitive to laurenobiolide.** A. Representative image of disc diffusion assay results, using indicated bacteria. B. Quantification of disc diffusion results. Error bars represent standard deviation. ND indicates no zone of inhibition detected.

### Isolation of Laurenobiolide-Resistant Mutants



**Figure 3. Testing colonies that grew within the laurenobiolide zone of inhibition for resistance to laurenobiolide.** A. Selected potential mutants from laurenobiolide disc diffusion plates. B. Isolated single colonies of potential mutants. C. Disc diffusion assay assessed sensitivity of potential resistant mutants to laurenobiolide compared to wild-type *S. aureus*. D. Of 4 isolates tested, 3 isolates (LR4A3M1, LR4A3M3, and LR4A3M4) have decreased levels of laurenobiolide sensitivity compared to the wild type.

### Identification of Mutations

Position	Mutation	Genetic Variant	Annotation	Gene	Description
1,528,329	A→T	Synonymous	<b>I189I (ATT→ATA)</b>	SAOUHSC_01602	maltose operon transcriptional repressor
1,659,236	C→G	Missense	<b>R89P (CGT→CCT)</b>	<i>rplU</i>	50S ribosomal protein bL21
2,079,882	(T) <sub>8-7</sub>	Frameshift Deletion	coding (780/846 nt)	SAOUHSC_02245	SAM-dependent methyltransferase

**Figure 4. Mutations associated with LB resistance identified across all three mutant strains that were not present in the wild type SA113.** These mutations were identified by whole genome sequencing, and all were found in each mutant genome.

## CONCLUSIONS AND FURTHER STEPS

### Laurenobiolide Antimicrobial Activity

- *S. aureus*, a Gram-positive bacterium, confirmed sensitive
- Active against *F. tularensis*, a Gram-negative bacterium
  - Suggests possibility for broad spectrum antibiotic
- *E. coli* did not exhibit sensitivity at concentration of 8 mg/mL

### Isolation of Laurenobiolide-Resistant Mutants

- May aid us in identifying the mechanism of action

### Identification of Mutations

- Two genes with potential resistance-causing mutations were identified: *rplU* and SAOUHSC\_02245

### Ongoing work: Complementation

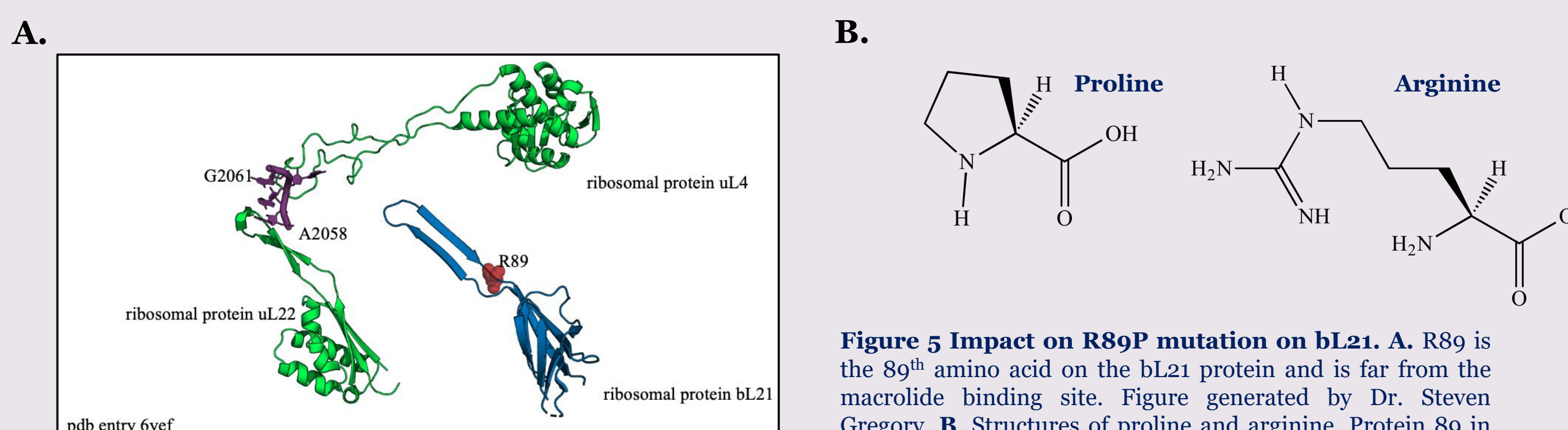
- For each gene of interest, reintroduce the wild-type gene into the resistant mutant.
- We expect that the wild-type version of one of the two genes will restore sensitivity. The gene that restores sensitivity is likely the gene important for laurenobiolide function and its mutation likely causes laurenobiolide resistance. These results will suggest a mechanism by which laurenobiolide exerts its effects.

### References

1. Kirk RD, Rosario ME, Oblie N, Jouaneh TMM, Carro MA, Wu C, Kim AM, Leibovitz E, Hunter ES, Literman R, Handy SM, Rowley DC, Bertin MJ. Screening the PRISM Library against *Staphylococcus aureus* Reveals a Sesquiterpene Lactone from *Liriodendron tulipifera* with Inhibitory Activity. ACS Omega. 2022 Sep 30;7(40):35677-35685. doi: 10.1021/acsomega.2c03539. PMID: 36249352; PMCID: PMC9558601.

### Acknowledgments

Research reported in this presentation was supported by the Rhode Island Institutional Development Award (IDeA) Network for Biomedical Research Excellence from the National Institute of General Medical Sciences of the National Institutes of Health under grant number P20GM103430. This research is supported by the (URD)<sup>2</sup> Research Grant. We would like to thank the Gregory lab and the Ramsey lab for productive joint lab meetings.



**Figure 5 Impact on R89P mutation on bL21.** A. R89 is the 89<sup>th</sup> amino acid on the bL21 protein and is far from the macrolide binding site. Figure generated by Dr. Steven Gregory. B. Structures of proline and arginine. Protein 89 in bL21 altered from an arginine into a proline. The difference in structure may alter binding affinity and conformation.

SAOUHSC\_02245  
 MKQLVGIPEMMLIPLIARAKEYENEPKIKDALSKKIFDGLDDMYKNVTCDDMSQI  
 GISIRTVIIDCVTKRLIKDNKDLIVNIGCGLDTRFQRFNKEKISWIDLDPESIEIRK  
 TFFKESNSYKMISSKMLDYSWIDDVKNYKFFNSKSDILFIEGLVLMYFDESVMTOLL  
 DTIIKMGDHNLTFAIEFCSKTIANNTRKHQSVSKLSSQPVFYKGYNDLKLKLEILP  
 NTRIRVIHEYNYFDYKKNRWGLFGYCRFIPYLKRLNNKIVLMKYKVPKRRORH

**Figure 6. Impact on frameshift mutation on SAM-dependent methyltransferase.** The wild-type SAM-dependent methyltransferase protein sequence is shown; the predicted methyltransferase domain is highlighted in purple. A single nucleotide deletion results in frameshift, causing the mutant protein to lose 18 amino acids (indicated by bold and underlined font), potentially altering the protein structure and folding.